

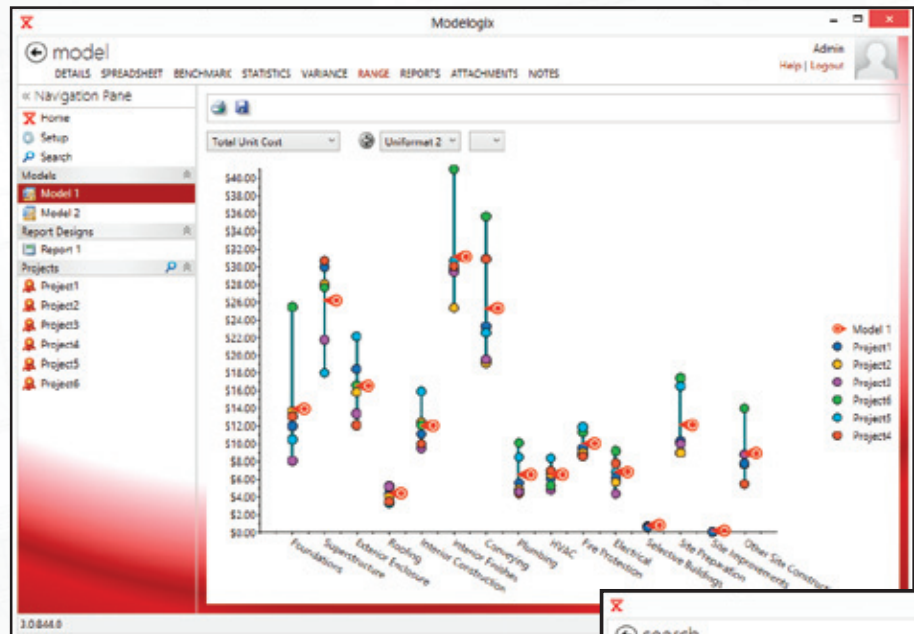


modelogix

Conceptual Estimating Software
for Construction Owners



View each estimate element's range based on historical data



Construction owners around the world turn to Modelogix® to improve the accuracy and transparency in their capital planning process by leveraging historical data to produce conceptual estimates.

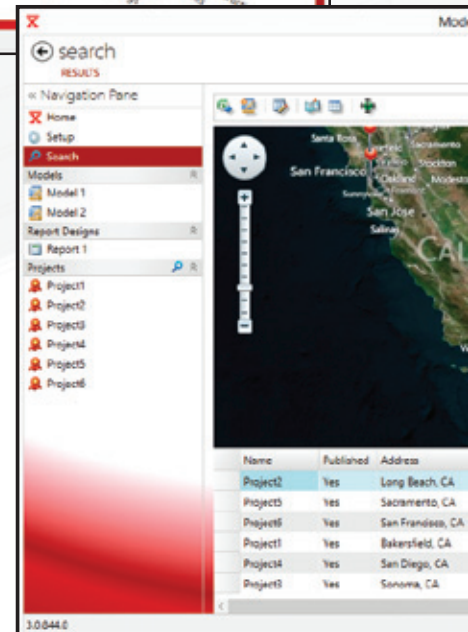
Conceptual estimating is a critical element to program and project planning. Modelogix eliminates errors and provide consistency to your organization.

Leverage Historical Data

- Modelogix lets your organization learn from past projects
- Use the historical record of completed projects to formulate better estimates on future projects
- Import data quickly and easily using Excel templates

Organize and Prepare Data

- Flexible coding structures allow data to be organized in multiple dimensions
- Use Smart Categories to search and find similar projects in your project archive to find the right mix of projects for your new conceptual estimate
- Normalize your data over time and location using cost indices
- Get instant access to all relevant supporting documents



Search and find historical data quickly and easily

Create Conceptual Estimates

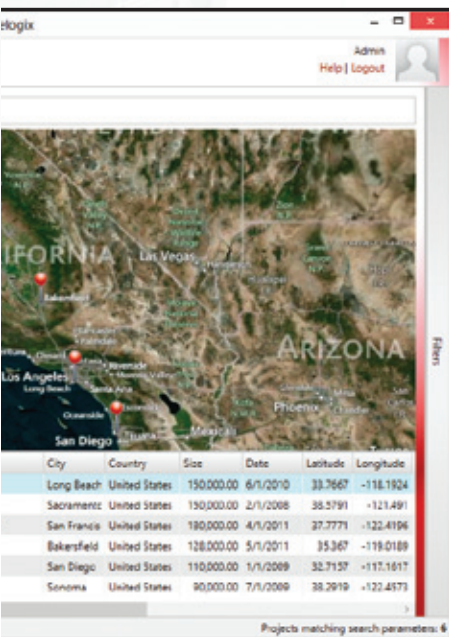
- Create conceptual estimates from historical data
- Use parametric estimating techniques when there is little or no scope definition

Analyze

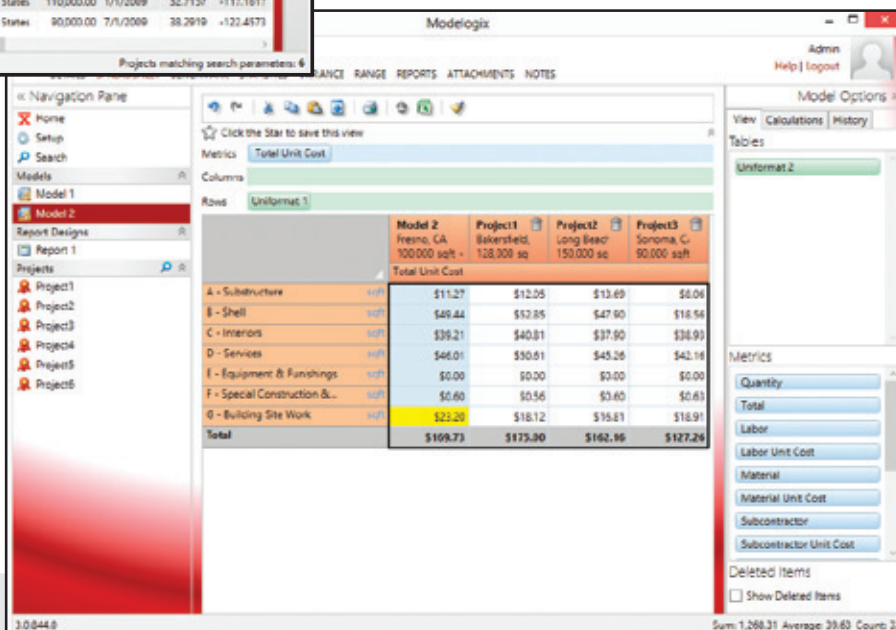
- View and compare your cost model side-by-side with the project estimates that formed the basis of the model
- Slice and dice your data to gain insights into your project plan
- Modelogix can help you find hidden risks in your estimates
- Analyze total cost by labor, material or other metrics
- Review bids from your contractors and compare them against each other – and your historical record to find hidden savings

Present and Document

- Produce reports and presentations that outline the details of the conceptual estimate, creating transparency throughout the process
- Collaborate and review estimates throughout your organization



City	Country	Size	Date	Latitude	Longitude
Long Beach	United States	150,000.00	6/1/2010	33.7667	-118.1924
Sacramento	United States	150,000.00	2/1/2008	36.5791	-121.491
San Francisco	United States	180,000.00	4/1/2011	37.7771	-122.4196
Bakersfield	United States	128,000.00	5/1/2011	35.367	-119.0189
San Diego	United States	110,000.00	1/1/2009	32.7157	-117.1617
Sonoma	United States	90,000.00	7/1/2009	38.2919	-122.4573

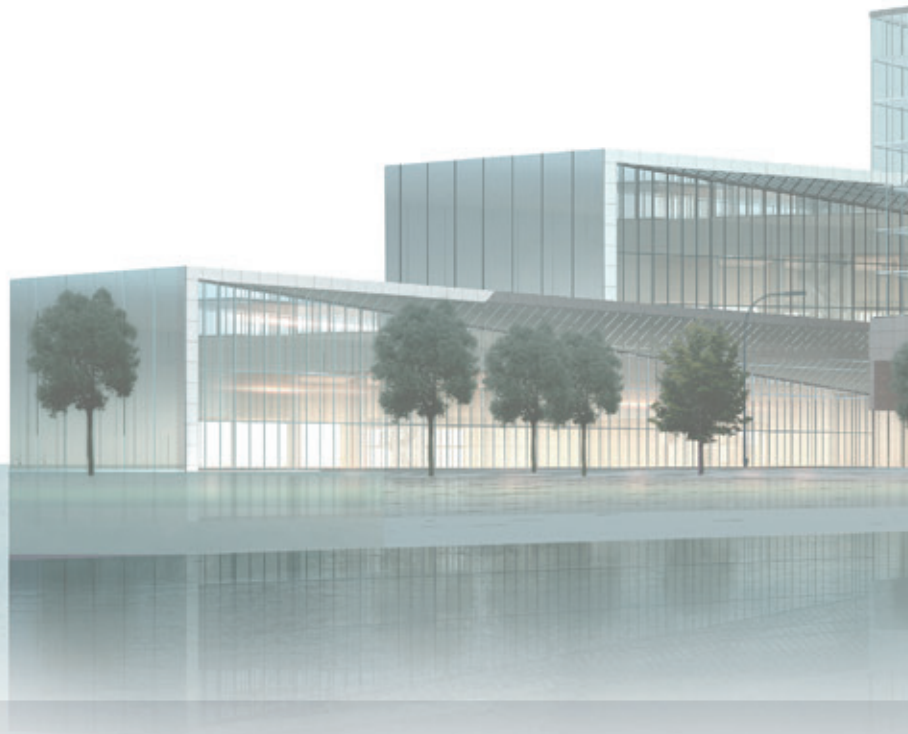


	Model 2 Fresno, CA 100,000 sqft	Project1 Bakersfield, 128,000 sq	Project2 Long Beach 150,000 sq	Project3 Sonoma, CA 90,000 sqft
Total Unit Cost				
A - Substructure	\$11.27	\$12.05	\$13.69	\$8.09
B - Shell	\$49.44	\$52.85	\$47.90	\$18.56
C - Interiors	\$39.21	\$40.81	\$37.90	\$38.93
D - Services	\$46.01	\$30.61	\$45.26	\$42.18
E - Equipment & Finishings	\$0.00	\$0.00	\$0.00	\$0.00
F - Special Construction &...	\$0.60	\$0.56	\$0.60	\$0.61
G - Building Site Work	\$23.29	\$18.12	\$15.81	\$18.91
Total	\$169.73	\$175.90	\$162.86	\$127.28

Tabular views provide all the estimate data on one screen

“Modelogix ability to pivot cost data using any combination of work breakdown structures at the touch of a button is amazing. The simplicity of the application and ease of use is remarkable for a tool with such a powerful engine behind it.”

Chris Rasmussen, General Growth Properties



1 (800) 850 2660 USA

+971 50 451 79 43 UAE

+966 535 29 37 66 Saudi Arabia

www.meridiansystems.com/solutions/owners